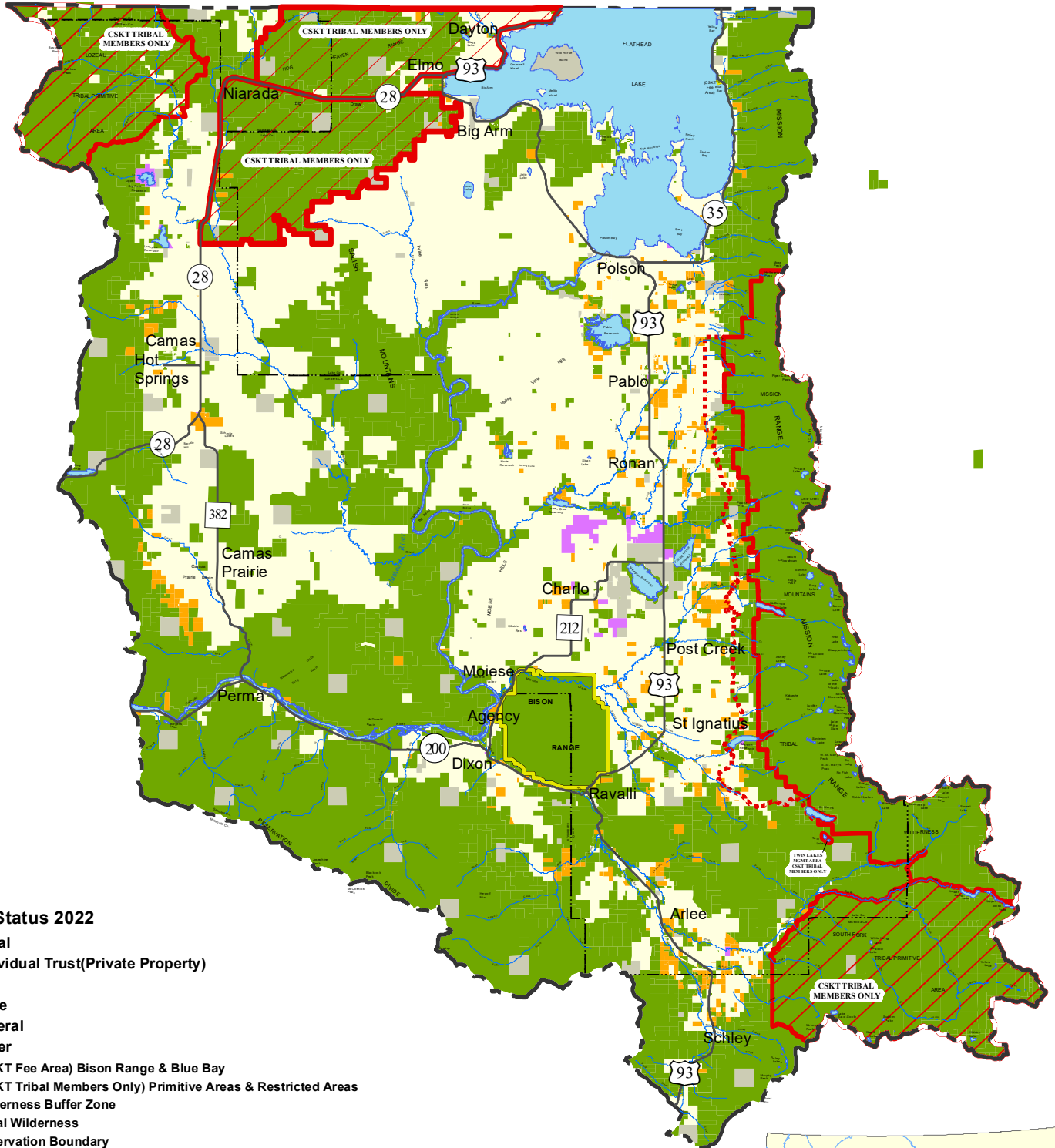


THE CONFEDERATED SALISH AND KOOTENAI TRIBES OF THE FLATHEAD NATION



Land Status 2022

- Tribal
- Individual Trust/Private Property
- Fee
- State
- Federal
- Water
- (CSKT Fee Area) Bison Range & Blue Bay
- (CSKT Tribal Members Only) Primitive Areas & Restricted Areas
- Wilderness Buffer Zone
- Tribal Wilderness
- Reservation Boundary
- Main Road
- County Boundary

Regarding Restricted Areas
The Flathead National Forest is a National Forest. It is managed by the U.S. Forest Service. The Flathead National Forest is a National Forest. It is managed by the U.S. Forest Service. The Flathead National Forest is a National Forest. It is managed by the U.S. Forest Service.

CS&K TRIBES
NATURAL RESOURCES DEPARTMENT
GIS PROGRAM

This map was created using ArcGIS Desktop 10.5.1. The data was provided by the Flathead National Forest, U.S. Forest Service, and the Flathead Nation. The map was created on 10/10/2018. The map was created by the Flathead Nation GIS Program. The map was created by the Flathead Nation GIS Program.

